

SYMPRO

Adherence of lung cancer patients to oral anticancer agents in the implementation phase: the Sympro-Lung Trial

Vashti, N.M.F. Tromp a,b, Corina J.G. van den Hurk f, Nicole E. Billingsy b,c,d, Annemarie Becker-Commissaris c,d, Iris Walraven g#, Jacqueline G. Hugtenburg a,b#
a. Amsterdam UMC location Vrije Universiteit Amsterdam, Department of Clinical Pharmacology and Pharmacy, Boelelaan 1117, 1081HV Amsterdam, The Netherlands b. Amsterdam Public Health, Quality of Care, Amsterdam, The Netherlands c. Amsterdam UMC location Vrije Universiteit Amsterdam, Department of Pulmonary Diseases, Boelelaan 1117, 1081HV Amsterdam, The Netherlands d. Cancer Center Amsterdam, Amsterdam, Netherlands. e. Amsterdam UMC location Vrije Universiteit Amsterdam, Department of Public and Occupational Health, Boelelaan 1117, 1081HV Amsterdam, The Netherlands f. Department of Research and development, Netherlands Comprehensive Cancer Organization (KNL), 19079, 3501 DB Utrecht, Netherlands. g. Department for Health Evidence, Radboud university medical center, Geert Grooteplein Zuid 10, 6525 GA Nijmegen, the Netherlands #. contributed equally to this work

Background

- SYMptom monitoring with Patient-Reported Outcomes (SYMPRO)-Lung is a stepped wedge cluster trial with 1 control and 2 intervention groups (Figure 1)
- Non-adherence of oral anti cancer agents (OACA) among these lung-cancer patients is unclear
- The intervention consisted of weekly symptom monitoring and adherence reporting in the SYMPRO-app

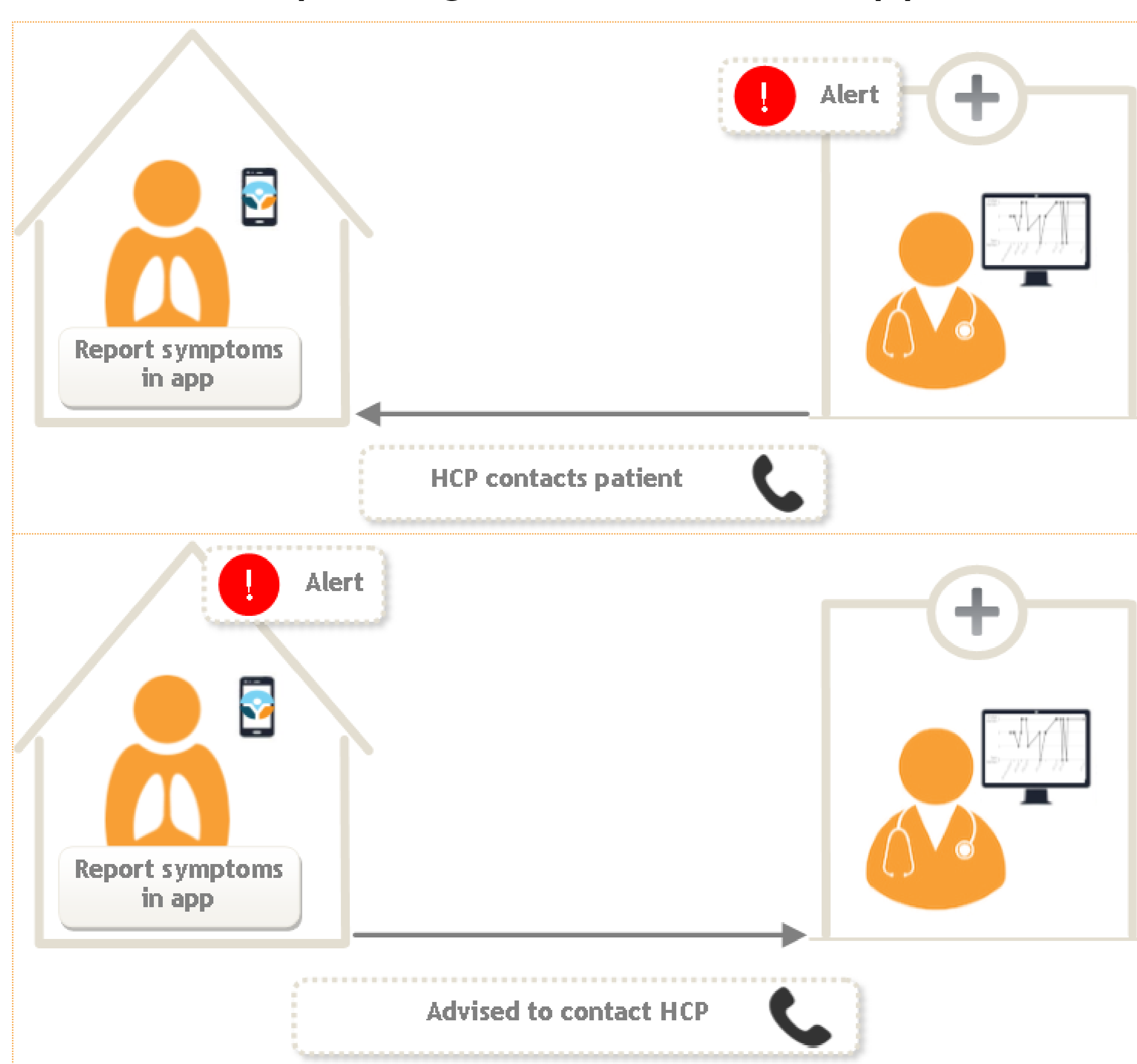
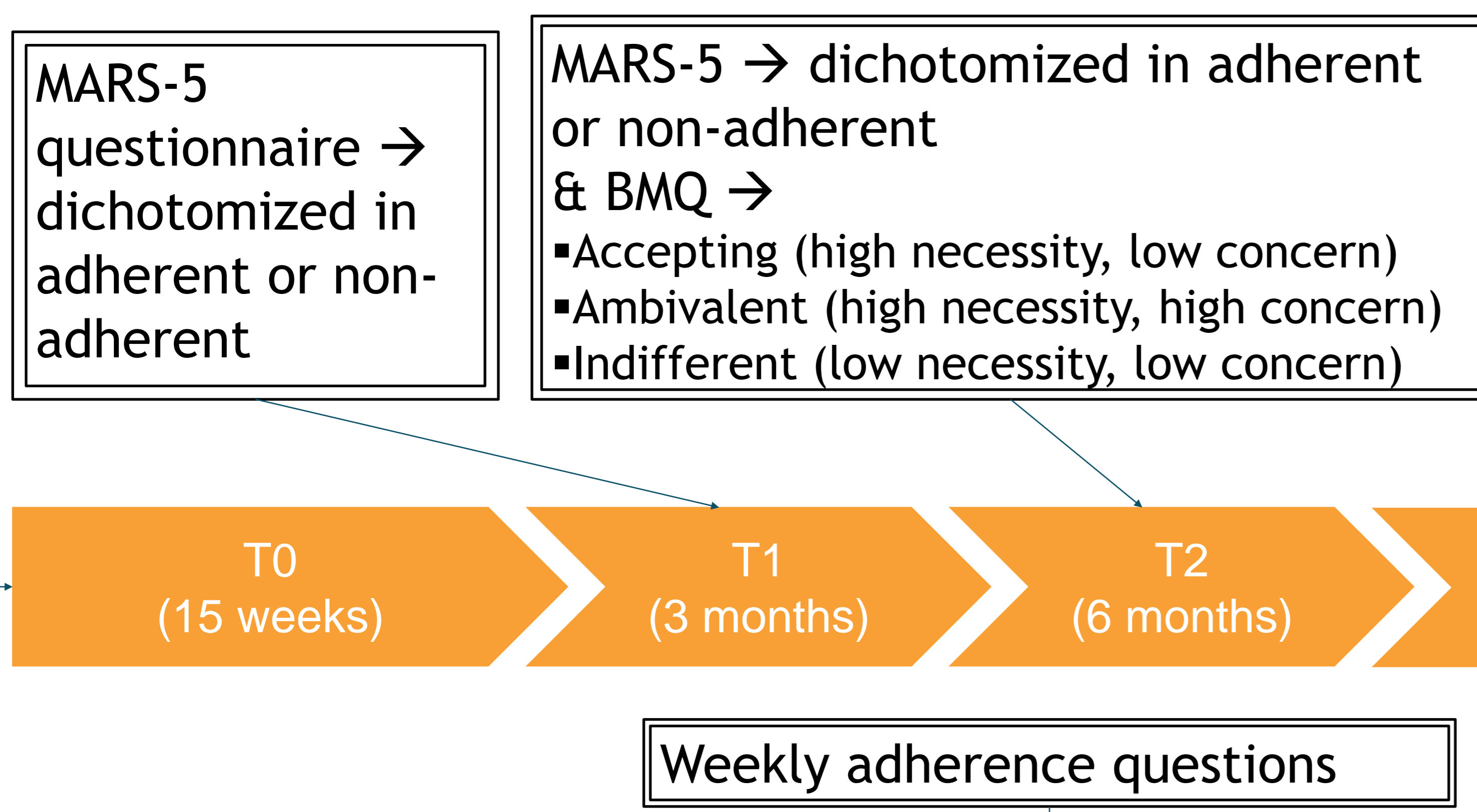


Figure 1. Intervention groups;
Top: Active group Bottom: Reactive group

Aim

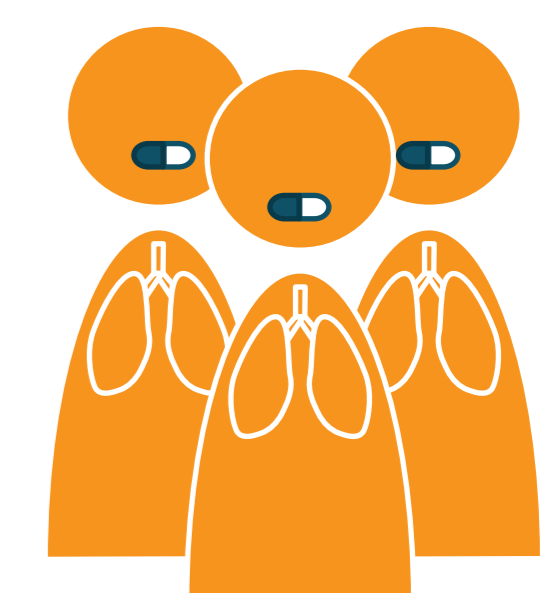
- To get insight into adherence to OACA of lung cancer patients in the first 6 months of their treatment

Method



Results

- 51 patients initiated OACA treatment
- T1: 34 filled out the questionnaire
- T2: 40 filled out the questionnaire
- Average age: 62 years
- 65% were female
- 89% lived not alone
- 37% reported comorbidities
- 62% were diagnosed with NSCLC Adenocarcinoma with targetable mutation



Non-adherence



MARS-5

- T1: 21% non-adherence
- T2: 18% non-adherence

BMQ

- Accepting: 77.5%
- Ambivalent: 20%
- Indifferent: 2.5%

Weekly questionnaire (n=34)

- 35% patients reported non-adherence
- All patients reported 'discussed with doctor'

Conclusion

- Adherence with OACA in lung cancer patients was sub-optimal
- Patients discussed non-adherence with their lung oncologist
- Patient-education is needed to improve beliefs about medication

